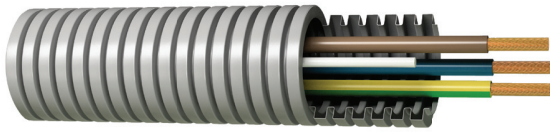


Prewired tube

H07V-K



Description

These cable tubings are indicated for executing permanent installations in housing, premises and offices, electrical control panels, as well as domestic and industrial lighting. Electrical conductors of different colours and sections required to execute each installation are inserted onto the inside of a corrugated tube, thus achieving a product that provides the installer with an integral service that has numerous advantages and also saves time and costs.



Applications

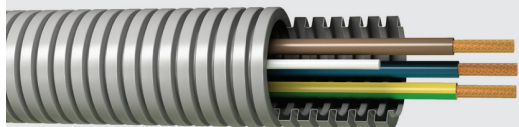
- Outdoor lighting installations. Earthing
- Indoor or receiver installations
- Indoor installations in housing
- Indoor installations in housing. Premises that contain a bath or shower
- Installations in premises with fire or explosion risk
- Installations in premises with special characteristics
- Electrical installations in caravans and in caravans parks

Technical characteristics

1. Conductor	Flexible electrolytic copper conductor (Class V) according to BS EN 60228:2005 (previously BS 6360) and UNE 60228.
2. Insulation	PVC insulation, type TI-1, according to UNE 21031-3 and HD 21.3S3: 1995/12:2008.
3. Tube	Fireproof polypropylene corrugated tube with low halogen content, low fumes emissions and non-flame propagating. Resistant to acids, bases and organic solvents and excellent compression properties (750N).
Rated voltage	450/750V
Test voltage	2.500V in A.C.
Maximum temperature	70°C

Other characteristics

- Colours according to UNE 21031 and HD 21.1S4:2002
- Non-flame propagating according to UNE-EN 60332, EN 60332 and IEC 60332
- PVC insulation with reduced hydrogen chloride (HCL) emission



Dimensions

Composition (n° x mm ²)	Tube Diameter (mm)	Resistance at 20 °C (Ω/km)	Wegiht (Kg/Km)
2x1,5	16	13,30	84
2x1,5	20	13,30	101
2x2,5	16	7,98	90
2x2,5	20	7,98	120
3x1,5	16	13,30	103
3x1,5	20	13,30	120
3x2,5	20	7,98	152
3x4	20	4,95	192
3x4	25	4,95	247
3x6	25	3,30	300
4x1,5	20	13,30	138
4x2,5	20	7,98	175
5x1,5	20	13,30	156
5x2,5	20	7,98	195
2x1,5+3x2,5	20	13,30/7,98	180
2x1,5+3x2,5	25	13,30/7,98	235
5x6	25	3,30	421
6x2,5	25	7,98	286
3x1,5+3x2,5	25	13,30/7,98	253
7x1,5	25	13,30	248
7x2,5	25	7,98	313
4x1,5+3x2,5	25	13,30/7,98	271
5x1,5+2x2,5	25	13,30/7,98	267
8x1	25	19,50	171
8x1,5	20	13,30	211

Coils with more than 3 conductors can be manufactured with one of the cores yellow/green.

ZARAGOZA HEADQUARTERS

Crta. Castellón Km 226,9
50720 La Cartuja Baja
Zaragoza - España
telephone +34 976 500120
fax +34 976 500138
e-mail info@rct.es

BARCELONA WAREHOUSE

Cables RCT Depósito Barcelona
C/ Maresme 87-91
08019 Barcelona - España
telephone +34 93 3079562
fax +34 93 3073400
e-mail barna@rct.es

SEVILLA WAREHOUSE

Cables RCT Depósito Sevilla
Pol Ind Calonge C/ Bronce Nave 4
41007 Sevilla - España
telephone +34 954 354946
fax +34 954 358491
e-mail sevilla@rct.es

VALENCIA WAREHOUSE

Cables RCT Depósito Valencia
Pol Ind Sedaví C/ Sequía de Calvera 5 A
46910 Valencia - España
telephone +34 96 3759070
fax +34 96 3759435
e-mail valencia@rct.es